

## Idea 6 - Prompt cards with pictures



These are optional prompt cards that you can print off to support discussions or activities with residents.

For example, they could be used alongside some of the other activities in the pack for a facilitated discussion or residents could be asked to pick their top three/rank the cards by importance.

Remember, we are looking for things that could be improved if funding and time went into researching it. For instance, eating and drinking is very important, but an individual resident might be quite happy with their diet and nutrition – however, they are worried about needing to go to hospital if something goes wrong, so ways to safely prevent that could be something meaningful to them that research could help with.

### PRINTING INSTRUCTIONS:

We would suggest that these are printed **single-sided**.

Make sure to keep in mind your group size and whether one set will be enough.



Should research focus on...

# Food, drink and nutrition?

For example, finding new ways to help people eat and drink enough, or helping people to be more independent at mealtimes?



Should research focus on...

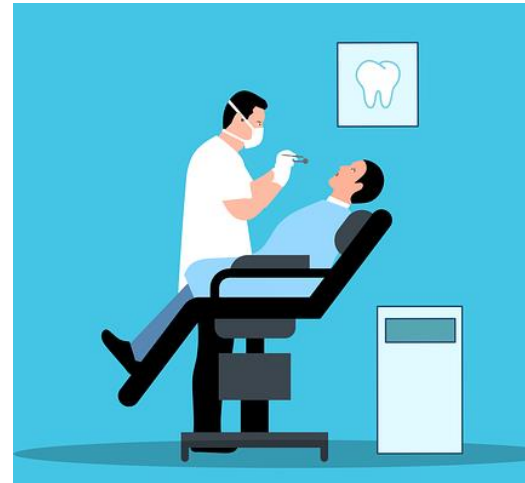
## Activities and interests?

For example, how to help residents pursue their interests, access the community, learn new things and spend their time the way they want to?



Should research focus on...  
**Social connections?**

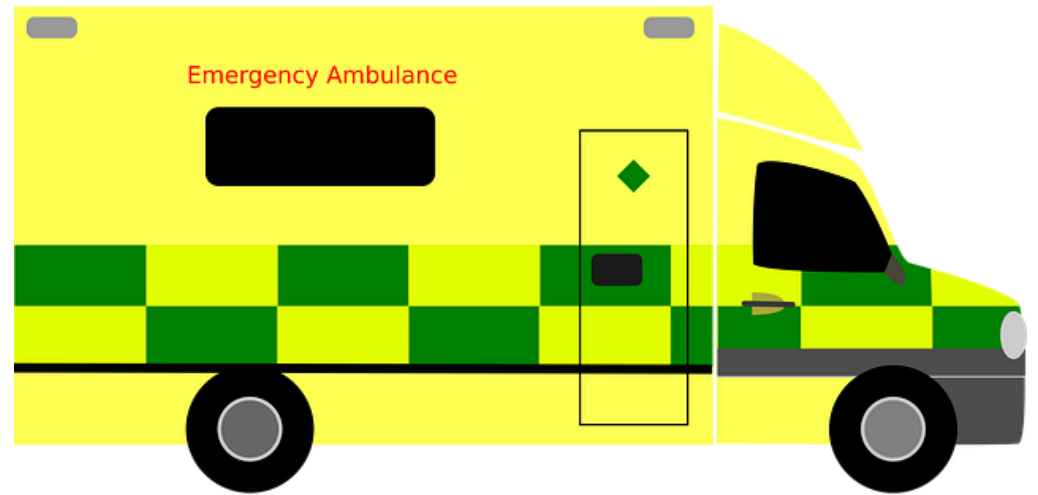
For example, how to help  
residents maintain or make new  
social connections?



Should research focus on...

**Health conditions and medications?**

For example, improving access to healthcare and finding new ways to manage the symptoms of health conditions?



Should research focus on...

## Hospital visits

For example, avoiding unplanned trips to hospital and the impact of time in hospital on health and wellbeing?



Should research focus on...

## Quality of life?

For example, how to maximise quality of life for residents and how we can measure quality of life?



Should research focus on...

**End of life care?**

For example, making sure people get the type of care that they want at the right time?

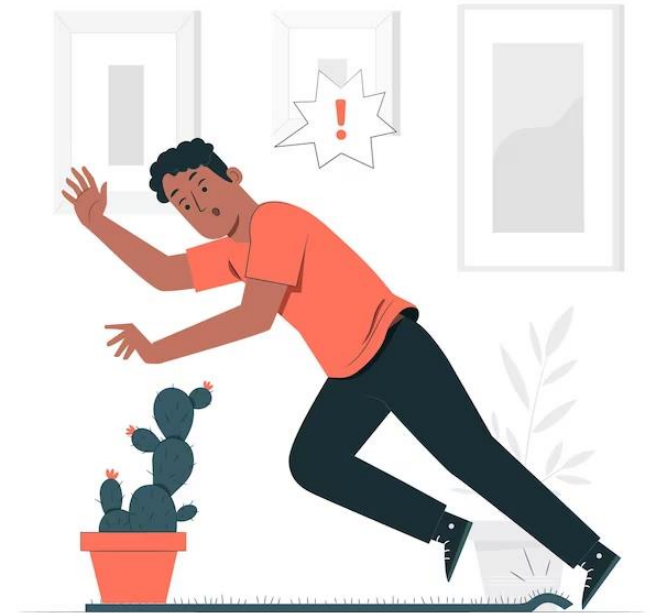




Should research focus on...

**Mental wellbeing?**

For example, how to improve mental wellbeing or help manage mental health conditions?



Should research focus on...

**Mobility and falls?**

For example, how to keep people mobile for longer  
and how to avoid falls?



**Should research focus on...**

**How best to staff and fund care homes?**

**For example, how to help staff retention and promote innovations in how care is delivered?**



Should research focus on...

**Exercise?**

For example, practical ways to help residents to stay fit for as long as possible?



Should research focus on...

**Living well with dementia?**

For example, helping people to stay as independent as possible?



Should research focus  
on...

**Something else?**

Is there something  
important missing?

Please consider filling in  
one of our answer cards  
with your views on care  
home research priorities.